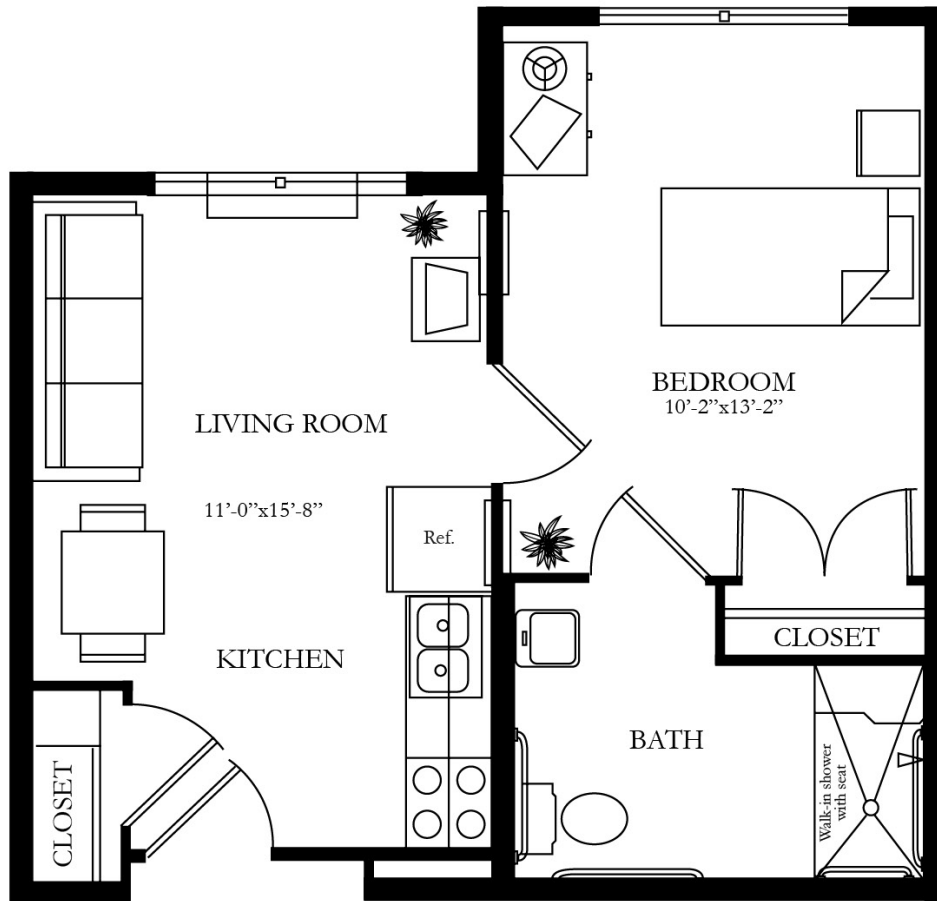


THE *A* LLENCREST*
Approximately 420 sq. ft.



*This apartment is specially adapted for handicapped residents.

Shown with furniture. All dimensions approximate.

Chesterbrook
RESIDENCES

A Caring Assisted Living Retirement Community

703-531-0781 | chesterbrookres.org | 2030 Westmoreland Street | Falls Church, VA 22043

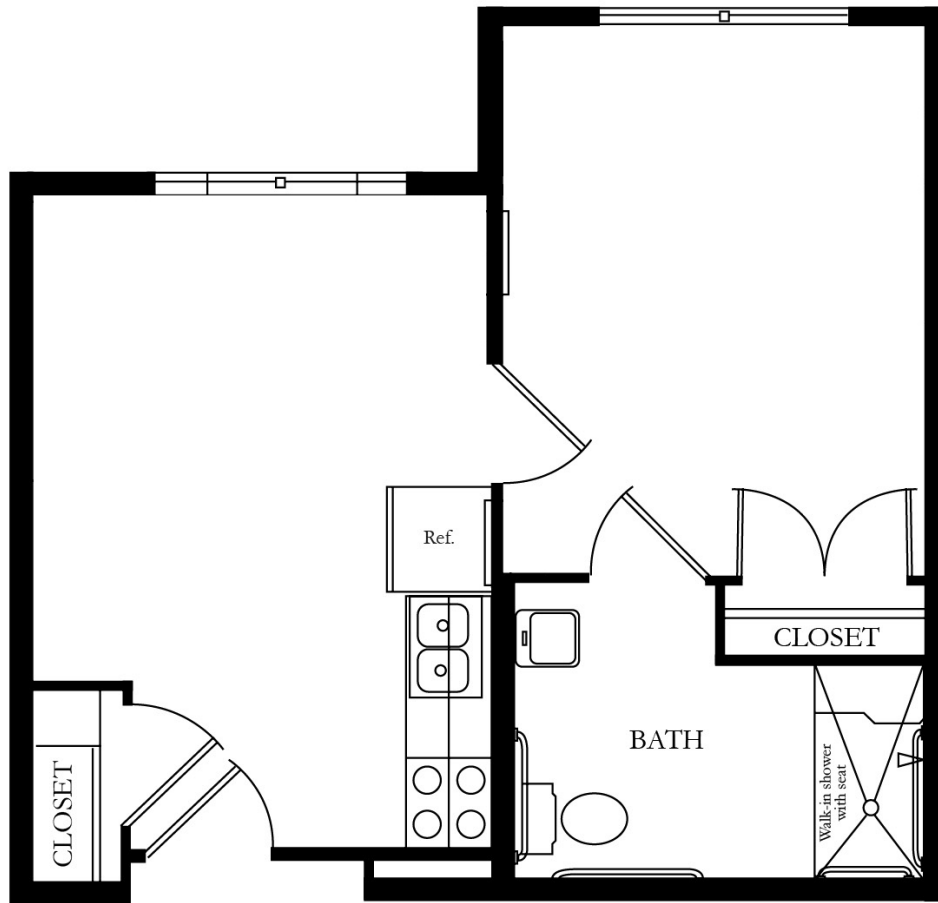
A nonprofit, nondenominational community sponsored by Chesterbrook Residences, Inc.



Coordinated Services Management, Inc.—Professional Management of Retirement Communities since 1981.



THE *A* LLENCREST*
Approximately 420 sq. ft.



*This apartment is specially adapted for handicapped residents.

Shown without furniture. All dimensions approximate.

Chesterbrook
RESIDENCES

A Caring Assisted Living Retirement Community

703-531-0781 | chesterbrookres.org | 2030 Westmoreland Street | Falls Church, VA 22043

A nonprofit, nondenominational community sponsored by Chesterbrook Residences, Inc.



Coordinated Services Management, Inc.—Professional Management of Retirement Communities since 1981.

